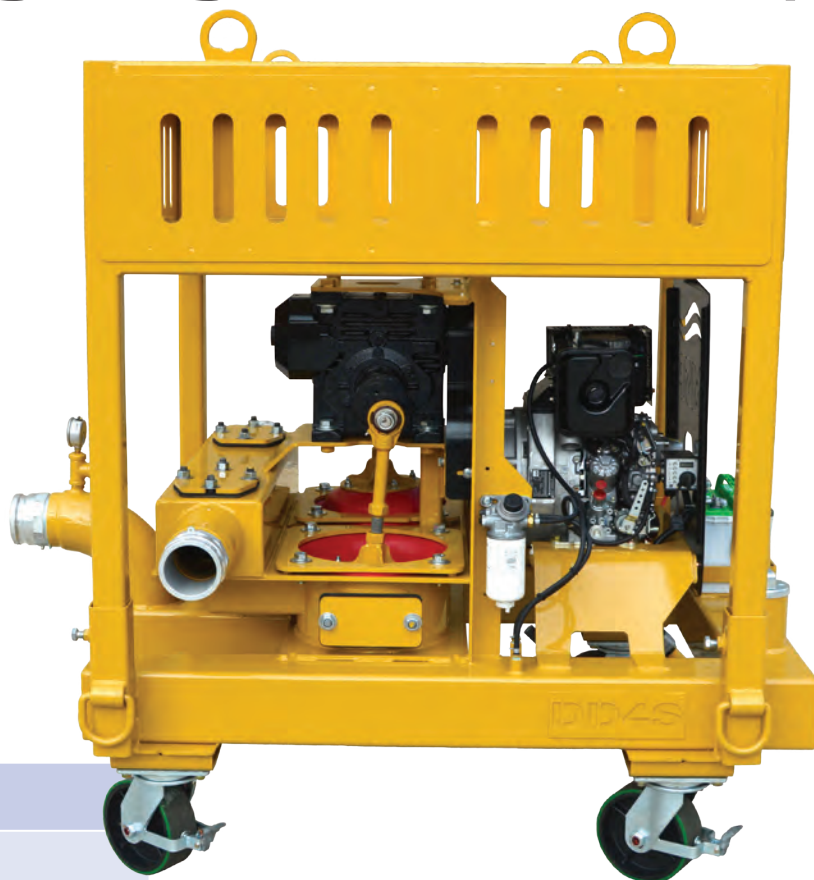


## DD-4S Barge High Volume Pump

### Engine Specifications:

Make/Model	HATZ 1D42Z
Horsepower	8.6 bhp@3600 rpm
Engine Displacement	25.20 Cubic inches (0.413 liters)
Engine Type	One Cylinder, Air-Cooled, Diesel
Standard Equipment	Instrument Control Panel w/Hour Meter
Safety Shutdowns	Low Oil Pressure



### Pump Specifications:

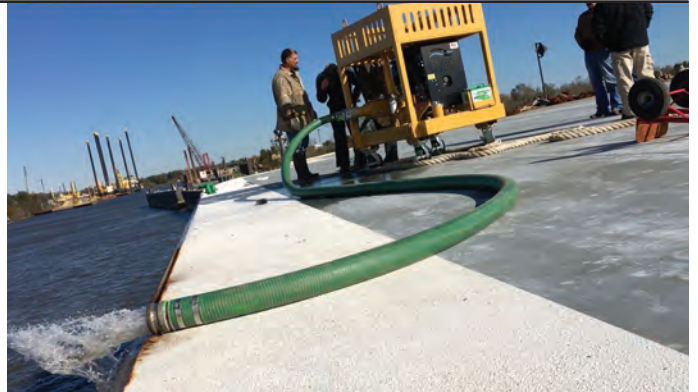
Pump Casing	A-36 Steel
Pump Capacity	425 GPM @ 2000 RPM
Solids Handling	3.5 inch (76.2 mm)
Suction & Discharge Valve Seats	Stainless Steel, 3/8" Plate
Flapper Valves	Weighted, Full-Flow Reinforced Rubber
Vacuum/Suction	26" plus Hg Wet, Up 10 CFM@15 Hg
Wheels	8" Cast Iron Wheels, 2 Swivel, 2 Stationary
Max CFM	60-70

Max Operating Temperature	120 °F / 48.88 °C
Max Suction Lift	28 Feet (8.54m)
Max Operating Speed	65-70 RPM (Gearbox) 2000 RPM (Engine)
Max Pressure Max Working Pressure	59 PSI @ 130 TDH 100 PSI
Max Operating Time	96 Hours (4 Days)
Fuel Consumption	5 - 6 Gallons/Day
Continuous Run Time	24 hours

Order at [MyersSethPumps.com](http://MyersSethPumps.com)  
or Contact MSP Sales at 904-389-6114

**Frame Specifications:**

Frame Construction	6-inch Square Tubing
Fuel Capacity	16.0 U. S. Gallons (60.6L)
Lifting Bale	Heavy Duty Single Point
Tie Downs	(4) Heavy Duty D-Rings
Height	55.625 inches (141.29 cm)
Width	45 inches (114.30 cm)
Length	63.625 inches (161.60 cm)
Weight	1350 lbs (612.35 kg)



**Standard Features Include:**

- Heavy Duty Battery and Cables
- Camlock Hose Fittings
- Large Fuel Filtration
- Lockable Fuel Cap
- Heavy Duty Lifting Bale
- Powder-Coated Frame and Components

**Optional Features Include:**

- Pushrod Protection Covers
- AUTO Start Control Panel
- GPS Telematics
- Hose Rack

